

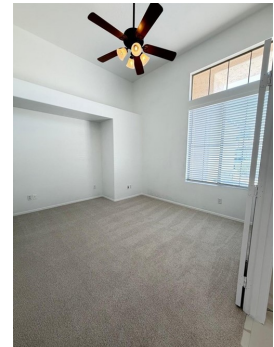
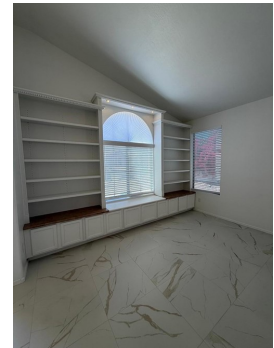
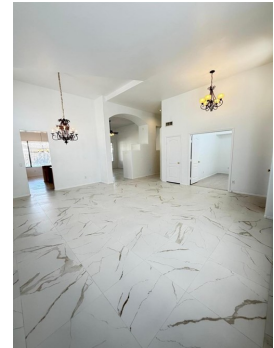


\$ 2,750



1776 W Canary Way, Chandler, AZ 85286

- » Beds: 4 | Baths: 2 Full
- » MLS #: 7026605
- » Single Family | 2,080 ft² | Lot: 9,344 ft²
- » More Info: 1776WCanaryWay.IsForSale.com



Stephanie Spade
 (480) 309-4621
Spadesandcompany@msn.com

MKS Realty Group
 1909 E Ray Rd
 Chandler, AZ 85225
 (480) 628-0467

Remarks

Beautifully updated 4-bedroom, 2-bath home located in the highly desirable Clemente Ranch community in Chandler! Offering 2,080 sq ft of living space, this move-in ready home has been refreshed from top to bottom with brand new tile flooring and carpet throughout, fresh interior paint, and stylish upgrades that make the home feel brand new. The spacious kitchen features gorgeous granite countertops, a brand new microwave, and plenty of space for cooking and entertaining. Major system updates include a new water heater and a newer water softener for added comfort and peace of mind. Step outside to enjoy the large backyard complete with a covered patio, grassy play area, and storage shed perfect for relaxing, entertaining, or extra storage needs. Conveniently located near top-rated schools, shopping, dining, and freeway access for an easy commute anywhere in the Valley. This beautifully maintained home combines comfort, convenience, and modern updates in one of Chandlers most sought-after neighborhoods!

